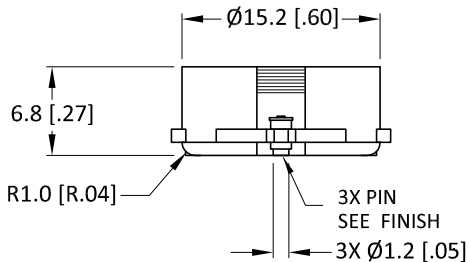
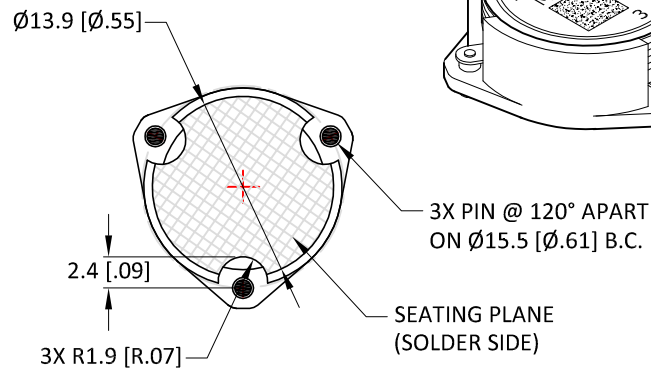
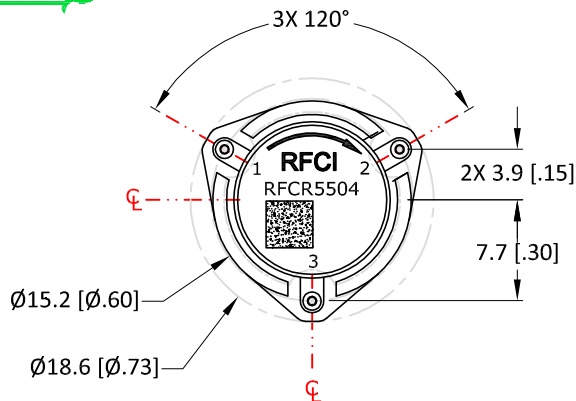
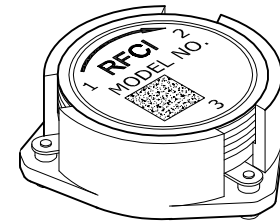


THIS DRAWING HAS BEEN GENERATED BY A CAD SYSTEM. CHANGES SHALL ONLY BE INCORPORATED AS DIRECTED BY THE DESIGN ACTIVITY. DO NOT REVISE MANUALLY.

REVISIONS

REV.	DESCRIPTION	ECO	DATE	APPROVED
B	REVISED MECHANICAL HOUSING BODY	18-007	10/31/18	P.T



Specifications

Parameter	Minimum	Typical	Maximum
Frequency Range (MHz)	1880		1930
Insertion Loss (dB)		< .22	.30
Isolation (dB)	20	> 23	
Return Loss (dB)	20	> 23	
FWD IMD: 2T at 37W PER T 5MHz Spacing (dBc)		70	

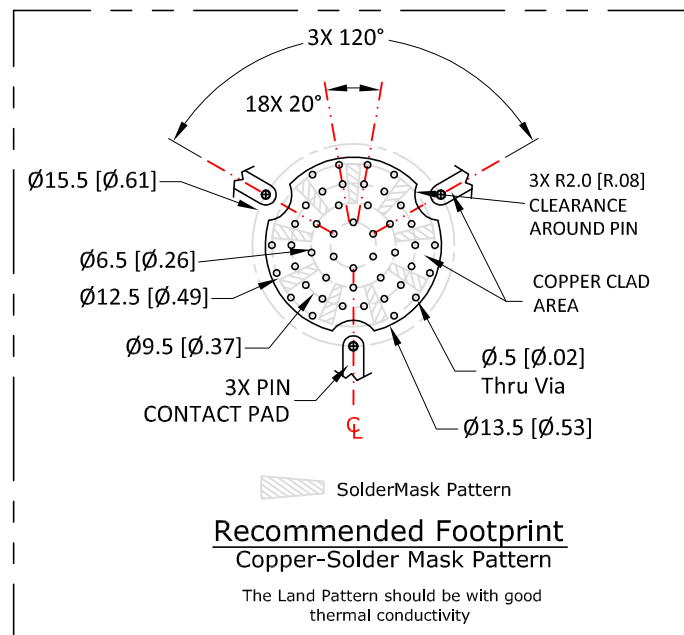
Power & Temperature Ratings

Parameter	Maximum
Forward PWR Peak/AVG	500/100 Watts
Reverse Power CW	80 Watts
Operating Temperature	-40 to +85° C
Storage Temperature	-50 to +125° C

NOTES:

- Typical Values Represent Performance @ +23 °C.
- S-Parameters to be measured by connecting Port 1 and 2 to VNA, and Port 3 to Load with return loss 30dB or higher

CW SMD CIRCULATOR MODEL: RFCR5504

Recommended Footprint
Copper-Solder Mask Pattern

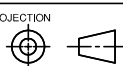
The Land Pattern should be with good thermal conductivity

Finish:

- Housing: Silver plated
- Pin: Gold plated
- Coplanarity specification: 0.10 [.004] MAX.

UNLESS OTHERWISE SPECIFIED
ALL DIMENSIONS ARE IN MILLIMETERS [INCHES]:

TOLERANCES ARE:
1 PLACE DECIMAL ±.2 [±.01] ANGULAR: ±1.0°
2 PLACE DECIMAL ±.10 [±.004] SURFACE ROUGHNESS 16/



APPROVALS

DATE

DRAWN BY:

CHECKED BY:

DESIGN BY:

ENGINEER BY:

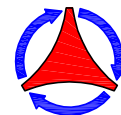
MFG. ENGR.

Q.A.

PROG. MGMT/MKT

TITLE

RFCI



OUTLINE/SPECS

SIZE
A

CAGE NO.

DWG NO.

CR5504-OS

REV.
B

DO NOT SCALE DRAWING

SCALE: FULL

SHEET 1 OF 1