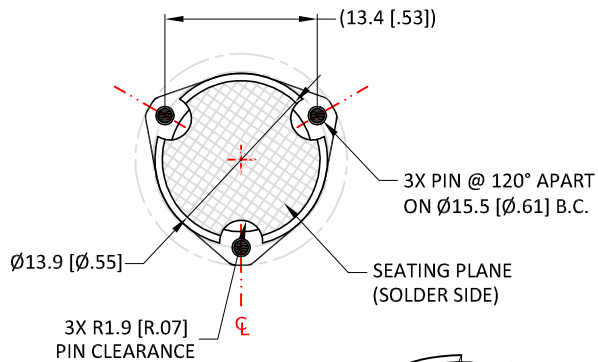
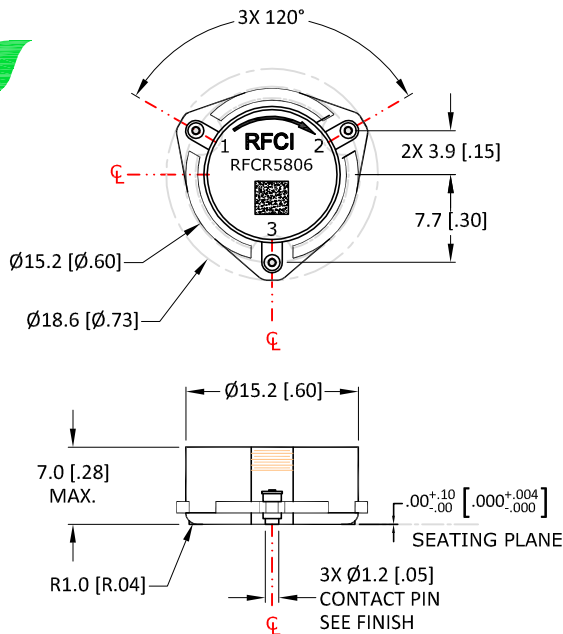


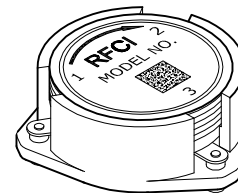
THIS DRAWING HAS BEEN GENERATED BY A CAD SYSTEM. CHANGES SHALL ONLY BE INCORPORATED AS DIRECTED BY THE DESIGN ACTIVITY. DO NOT REVISE MANUALLY.

REVISIONS				
REV.	DESCRIPTION	ECO	DATE	APPROVED
C	ADD ISOMETRIC VIEW	18-010	11/14/18	P.T



Terminal:
 Port (1)-(2): Input-Output
 Port (2)-(3): Input-Output
 Port (3)-(1): Input-Output

Finish:
 Body Housing: Silver plated
 Pin: Gold plated
 Coplanarity specification: 0.10 [.004] MAX.



Specifications

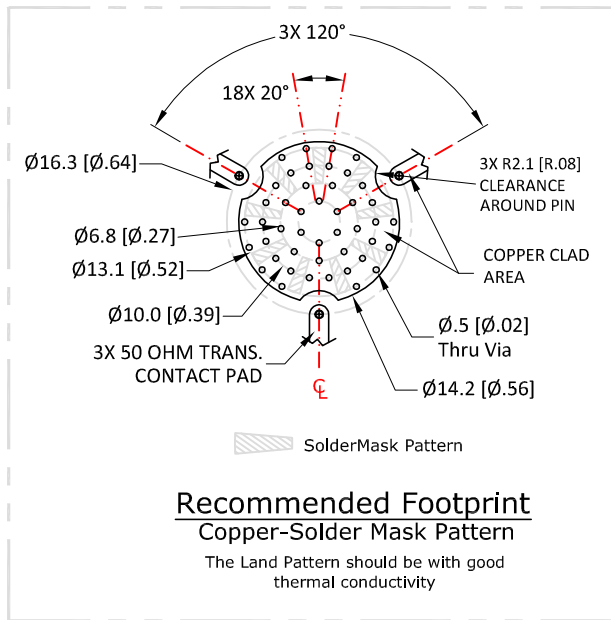
Parameter	Minimum	Typical	Maximum
Frequency Range (MHz)	2200		2400
Insertion Loss: In-Out (dB)		< 0.25	0.30
Isolation: Out-In (dB)	20	> 23	
Return Loss (dB)	20	> 23	

- NOTES:
 1. Typical Values Represent Performance @ +23 °C.
 2. S-Parameters to be measured by connecting Port 1 and 2 to VNA, and Port 3 to Load with return loss 30dB or higher

Power & Temperature Ratings

Parameter	Maximum
Forward PWR Peak/AVG	500/100 Watts
Reverse Power CW	80 Watts
Operating Temperature	-40 to +85° C
Storage Temperature	-50 to +125° C

Permanent damage to the Device or reduce reliability if exceeding any of the limits.
 Port (1),(2)and (3): DC connected and floating as the only ground connection.



Recommended Footprint
 Copper-Solder Mask Pattern
 The Land Pattern should be with good thermal conductivity

CW SMD CIRCULATOR MODEL: RFCR5806

UNLESS OTHERWISE SPECIFIED ALL DIMENSIONS ARE IN MILLIMETERS [INCHES]: TOLERANCES ARE: 1 PLACE DECIMAL ±.2 [±.01] ANGULAR: ±1.0° 2 PLACE DECIMAL ±.10 [±.004] SURFACE ROUGHNESS 16/	THIRD ANGLE PROJECTION		
	APPROVALS	DATE	
REMOVE ALL BURRS AND BREAK SHARP EDGES. SURFACE TEXTURE TO BE IN ACCORDANCE WITH LATEST ANSI B46.1 DIMENSIONING & TOLERANCING IN ACCORDANCE WITH LATEST ANSI Y14.5	DRAWN BY:	CHECKED BY:	SIZE A
PROPRIETARY NOTE: "THE INFORMATION CONTAINED ON THIS DOCUMENT IS CONSIDERED TO BE CONFIDENTIAL MATERIAL PROPRIETARY TO RF CIRCULATOR ISOLATOR Inc. (RFCI) AND IS PROVIDED SOLELY FOR INFORMATION PURPOSES. THIS INFORMATION SHALL NOT BE USED BY ANYONE OTHER THAN RFCI TO DESIGN OR CONSTRUCT ANY OF THE ITEMS DEPICTED, NOR SHALL IT BE DISCLOSED, DUPLICATED, OR COPIED FOR ANY PURPOSE, NOR MADE AVAILABLE TO ANY THIRD PARTY WITHOUT THE PRIOR WRITTEN CONSENT OF A RFCI OFFICIAL."	DESIGN BY:	MFG. ENGR.	CAGE NO.
	Q.A.	PROG. MGMT/MKT	DWG. NO. CR5806-OS
	DO NOT SCALE DRAWING		SCALE: FULL
			SHEET 1 OF 1